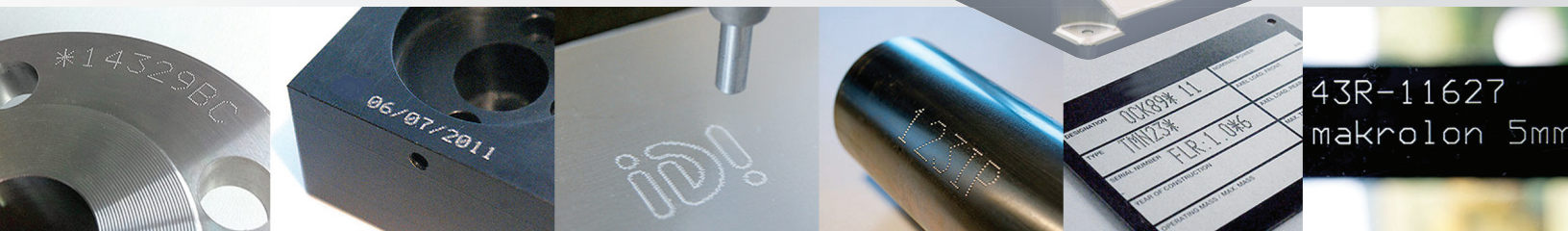
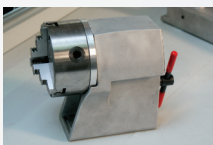


Why choose Flexmark?

- **Ease of use:** User-friendly software interface and intuitive navigation with icon-based menu
- **Legibility:** Large, high-definition color screen
- **Economical:** High-quality, versatile performance for the price
- **Ergonomic:** Two holding handles on the marking head; locating foot and control box with carrying handle
- **Durable:** Aluminium cast construction
- **Powerful:** Mark several characters per second; store thousands of files; USB-based controller is able to update in less than 2 minutes
- **Versatile:** Mark on many different materials up to 63 HRC (steel, aluminum, stainless, titanium, plastic, wood)
- **Clever Technology:** Patent-pending IDI (Intelligent Driving Impact) Basic technology ensures consistent contact between the stylus tip and the part, creating high-quality marks even while marking uneven part surfaces (flat or cylindrical)



Accessories and Options



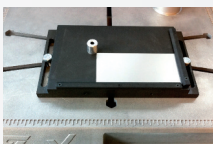
Heavy-duty Rotary D-axis



Standard Rotary D-axis



Bar End Tool



Nameplate/Tag Support Fixture



Parts Support



Maintenance Kit

Technical Features

- Marking window: 4.72" x 2.36"
- Carbide stylus with 90° included angle (also available in 120°)
- Column can be rotated up to 180°
- Manual column scroll adjustment by step of 0.12"

	Head	Bench/Column
Length	8.27"	15.75"
Width	10.75"	13.78"
Height	10.43"	23.78"
Weight	9.48 lbs.	14.33 lbs.

Weights listed exclude cable.

Bench & Hand-held Marking with a Single Tool!

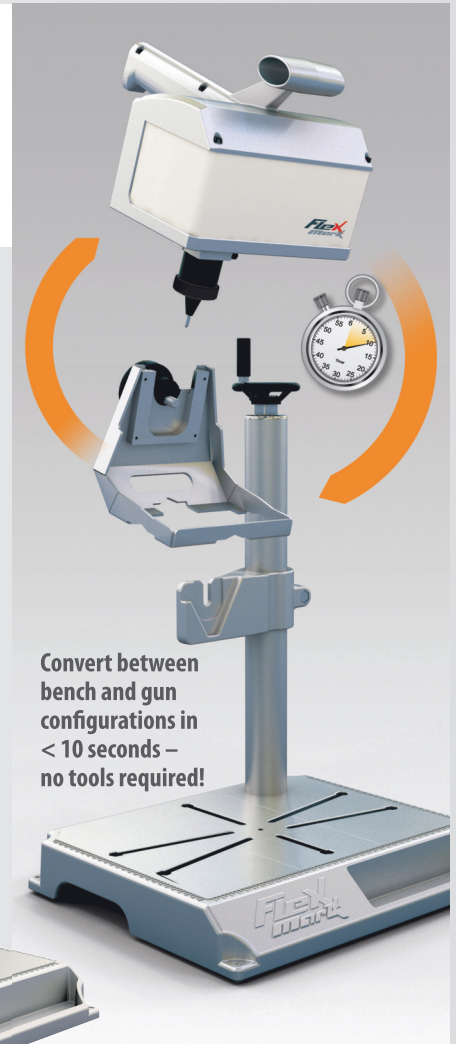
The FlexMark 2-in-1 marking system provides an ideal direct part marking solution for small- and medium-sized manufacturers. It meets the needs of sub-contractors in industries such as aerospace, automotive, nuclear, petroleum and general machining.



Hand-held Model

Self-contained: Light and easy to transport. Can mark medium to large parts indoors as well as outside.

Easy to use: With a dual-handle design, the FlexMark marks efficiently in any locating position.



Convert between bench and gun configurations in < 10 seconds – no tools required!

Combo Model

Flexible: The Bench model can be converted to a Hand-held in less than 10 seconds and can be used to mark all kinds of parts.

Smart: The outline of the marking window is embedded in the machine base along with graduations for easy part location. Support tools can be stored in the machine base.



IDI Basic Technology*

The quality of the marks is ensured even with different heights between the part surface (flat or cylindrical) and the stylus tip. This is automatically controlled by the FlexMark software.

* International patent pending.



Control Box

Provides intelligent marking management with multiple marking possibilities (text, variable, serial number, time stamp or logo).

Large, high-definition color screen and icon-based menu.

Stores thousands of files, with quick transfers via USB.

