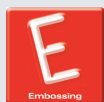


## FEATURES



## USED BY:

- SHIPYARDS
- STEEL PLANTS
- MILITARY
- MANUFACTURERS OF:  
TRAILERS  
ENGINES  
ELECTRICAL APPLIANCES  
CUSTOM VEHICLES  
MACHINERY

## IDEAL FOR:

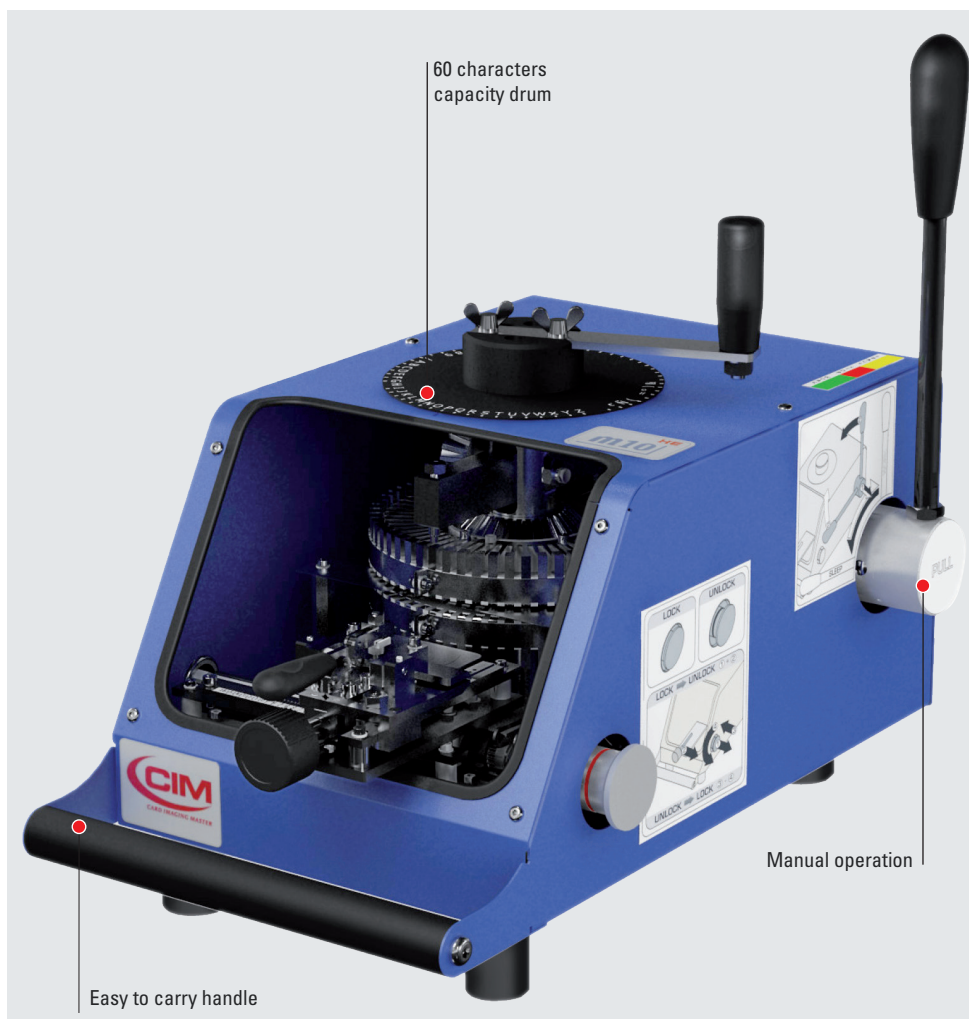
- MANUAL PERSONALIZATION OF  
METAL PLATES IN ALL  
ENVIRONMENTS

NO POWER SUPPLY REQUIRED  
TOTALLY PORTABLE



# MANUAL SERIES M10 HE

**NAVITAGE**  
SOLUTIONS  
1-855-828-4300



**EMBOSSING OR DEBOSSING  
PORTABLE, ROBUST AND COMPACT FOR  
DOG TAG AND METAL PLATE MARKING**

### Embossing type set

Blocco 5 mm



Simplex 2



Blocco USA



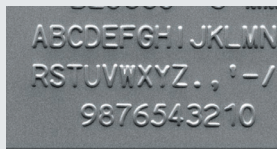
### Debossing type set

Block USA



**CIM**  
CARD IMAGING MASTER

# TECHNICAL FEATURES



## PLATE

### plate dimensions

width: 0.47 - 3.74 in / 12- 95 mm

height: 0.47 - 2.95 in / 12 - 75 mm

thickness: 0.0157 - 0.0354 in / 0.4 - 0.9 mm

### plate materials

stainless steel, carbon steel, aluminum, copper, brass

### feed

manual

## EMBOSSING

### technology

Embossing or debossing

### drum capacity

60 slots

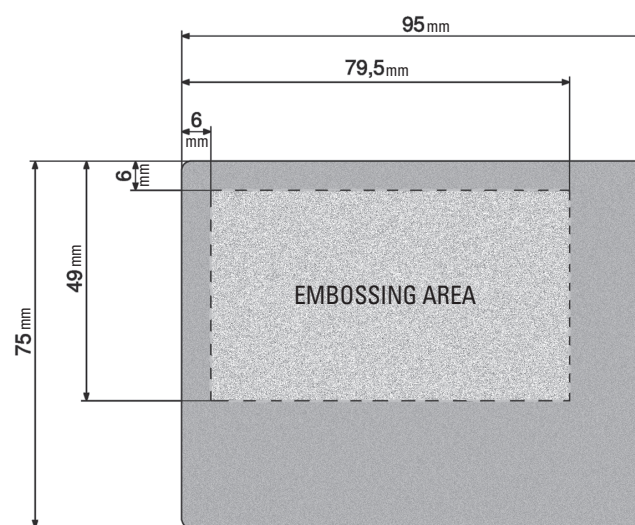
### type set

many characters configurations available:

Embossing: Simplex 2, OCRB1, Blocco USA, Blocco 5 mm - others available on request

Debossing: Elite Dog Tag

### embossing area\*



\*Measurements are taken from the base and left side of the character.

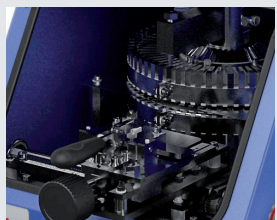
## HARDWARE

**dimensions (WxDxH)** 9.8 x 17.3 x 10.2 in / 250 x 440 x 260 mm

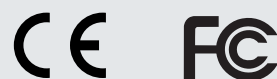
**weight** 28 lbs / 13 kg



Character selection ring



60 characters capacity drum



Portable, yet robust and compact. The **M10 HE** is entirely manual and can be used anytime, anywhere.

No power supply required.

With its 60 characters capacity drum, the automatic spacing function and the whole plate free format, the **M10 HE** is designed to meet a wide range of requirements and is ideal for the personalization of low to medium tag volumes.

[cim-usa.com](http://cim-usa.com)

